



乾行达科技  
CANSINGA

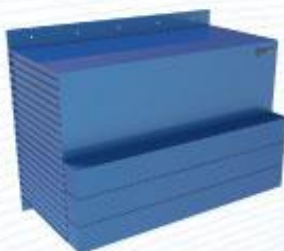
# Crash Test Barrier

汽车碰撞测试壁障



## Frontal Offset Deformable Barrier

### 正面偏置可变形壁障



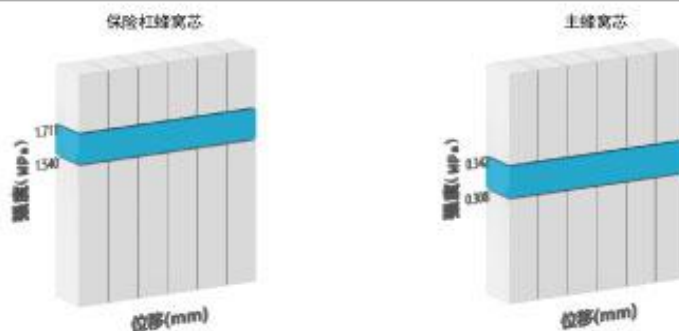
#### 描述

正面偏置可变形壁障用于汽车碰撞测试安全领域。壁障性能旨在提供具有足够精度的测量工具，以确保重复性和反应机动车的保护性能。

#### 结构

- 主蜂窝芯 19.1mm±20% 3003
- 保险杠蜂窝芯 6.4mm±20% 3003
- 底板 2.0mm 5052 H32
- 覆板 0.8mm 5052 H34
- 保险杠单元面板 0.8mm 5052 H34

#### 压缩性能（静态）



我公司已通过DIN6701质量管理体系和ISO 9001: 2015质量管理体系认证。

**重要声明：**本介绍中包含的壁障产品，其过程或标准有关的信息旨在保持最新、准确和完整。但是，我司无法保证总是如此。因此，购买者或用户有责任进行充分的测试和评估，以确定我司产品对特定产品的适用性。

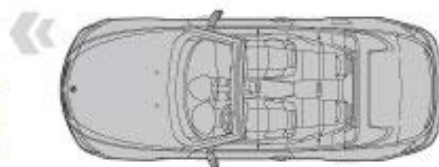
这些材料和产品规格中的信息并不构成销售合约，意向CANSINGA提交订单即构成购买合约，如果被CANSINGA接受，须遵守CANSINGA的销售条款和条件。对于这些材料或信息，无论是明示或暗示的，CANSINGA均不做任何形式的保证，包括但不限于对特定用途的适用性和通用性的默示担保。CANSINGA拥有并应保留其知识产权的全球所有权利，以及这些材料中使用的任何其他商标均为其各自所有者的财产。材料中的信息不应被解释为对以下方面的诱使，允许或推荐：侵犯任何第三方的任何专利或其他知识产权。

#### 技术规范

United Nations ECE R94  
 European Directive 96/79/EC  
 NHTSA Lab Test Procedure Dynamic Side Impact  
 Protection TP214D Appendix C

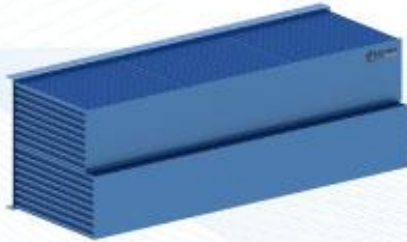
#### 可用性

随箱附有合格证书和测试数据。  
 油漆：灰色或蓝色防反射油漆标准、定制漆  
 包装：单个纸箱1075mm X 825mm X 580mm  
 包装重量：25kg



## Side Impact Moving Deformable Barrier

### 侧面移动变形壁障



#### 描述

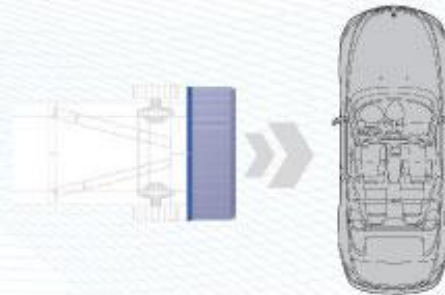
侧撞移动变形壁障是几种经过认证的蜂窝状壁障之一，用于汽车安全领域的全面碰撞测试。该产品性能旨在提供一种具有足够精度的测量工具，以确保重复和相关的结果以反映机动车辆对乘员的防护性。

#### 结构

- 下组蜂窝芯 (1-3块) 19mm±10% 5052
- 上组蜂窝芯 (4-6块) 19mm±10% 3003
- 背板3.0mm 5052 H32 穿孔
- 面板0.5mm 5052 H32

#### 技术规范

United Nations ECE R95 Amendment 3  
 European Directive 96/27/EC



#### 可用性

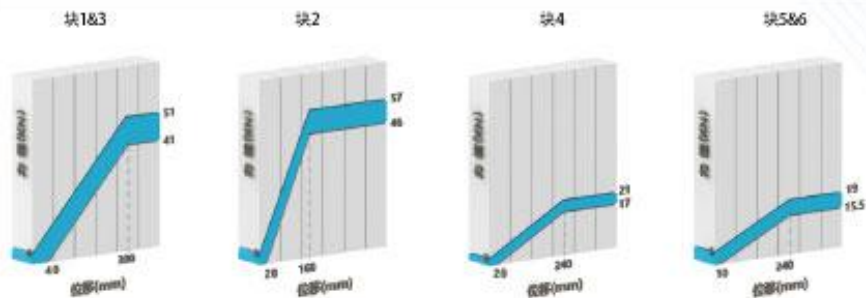
随箱附有合格证书和测试数据。

油漆：灰色或蓝色防反射油漆标准，定制漆

包装：单个纸箱体积：1600mm × 560mm × 600mm

包装重量：30kg

#### 压缩性能 (静态)



我公司已通过DIN6701质量体系及ISO 9001: 2015质量管理体系认证。

**重要声明：**本介绍中包含的壁障产品，其过程或标准有关的信息旨在保持最新、准确和完整。但是，我司无法保证总是如此。因此，购买者或用户有责任进行充分的测试和评估，以确定我司产品对特定产品的适用性。

这些材料和产品规格中的信息并不构成销售合约。您向CASINGA提交订单即构成购买合约。如果被CASINGA接受，须遵守CASINGA的销售条款和条件。对于这些材料或信息，无论是明示或暗示的，CASINGA均不做任何形式的保证，包括但不限于对特定用途的适用性和适用性的暗示担保。CASINGA拥有并应保留其知识产权的全球所有权利，以及这些材料中使用的任何其他商标均为其各自所有者的财产。材料中的信息不应被解释为对以下方面的诱使、允许或推荐：侵犯任何第三方的任何专利或其他知识产权。

## Frontal Offset Deformable Barrier

### 正面偏置可变形壁障



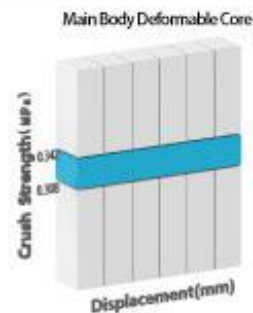
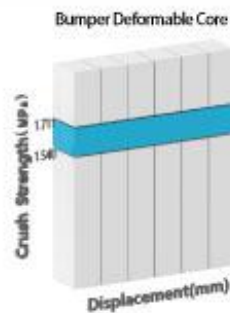
#### Description

The Frontal Offset Barrier is used for full scale crash testing in the automotive safety field. Barrier performance is intended to provide a measurement tool with sufficient precision, to ensure repetitive and correlative results that to reflect the protective performance of a motor vehicle with respect to passenger.

#### Construction

- Main Honeycomb Core 19.1mm ± 20% 3003
- BUMPER Honeycomb Core 6.4mm ± 20% 3003
- Base Plate 2.0mm 5052 H32
- Shroud Plate 0.8mm 5052 H34
- BUMPER Unit faceplate 0.8mm 5052 H34

#### Crush Properties (Static)

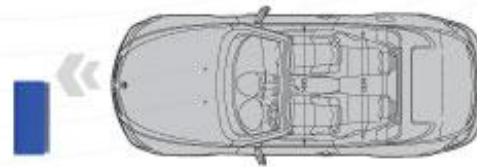


Our company has obtained DIN6701 quality system and ISO 9001: 2015 certification.

**IMPORTANT NOTICE:** This introduction includes these barrier products, and its relevant information processes or standards is aimed to keep latest, accurate, and complete. However, Cansinga cannot warrant that this is always like this. Accordingly, it is the purchaser's or user's responsibility to conduct sufficient testing and evaluation, to ensure the suitability of Cansinga's products for a particular purpose. The information of these materials and product specifications does not constitute a sales contract. You submit an order to Cansinga, which will constitute a sales contract. If accepted by Cansinga, it must abide by Cansinga's terms and conditions of sale. Cansinga DOES NOT MAKE WARRANTIES OF ANY KIND FOR THESE MATERIALS OR INFORMATION, EITHER EXPRESS OR IMPLIED, INCLUDING BUT NOT LIMITED TO THE IMPLIED WARRANTIES OF MERCHANTABILITY AND FITNESS FOR A PARTICULAR PURPOSE. Cansinga owns and shall retain all worldwide rights in its intellectual property, and any other trademarks are used in these materials, which are the property of their respective owners. The information shall not be construed as an inducement, permission, or recommendation in these materials; infringe any patent or other intellectual property rights of any third parties.

#### Specifications

United Nations ECE R94  
 European Directive 96/79/EC  
 NHTSA Lab Test Procedure Dynamic Side Impact Protection  
 TP214D Appendix C



#### Availability

Accompanying with Certificate of Qualification and Test.

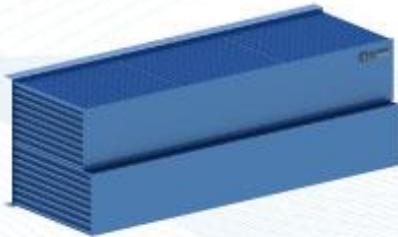
Paint: Grey or Blue anti-reflective paint standard,  
 Customizing paint

Packaging: Single carton Volume: 1075mm × 825mm × 580mm

Packaged Weight: 25kg

## Side Impact Moving Deformable Barrier

### 侧面移动变形壁障



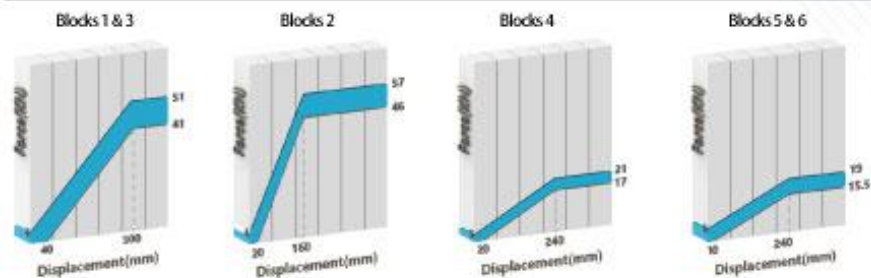
#### Description

Side Impact Moving Deformation Barrier is one of several certified honeycomb barriers, used for full-scale crash testing in the automotive safety field. This product performance is intended to provide a measurement tool with sufficient precision, to ensure repetitive and correlative results to reflect the protective performance of a motor vehicle with respect to passenger.

#### Construction

- Lower Core (sections 1-3) 19mm±10% 5052
- Upper Core (sections 4-6) 119mm±10% 3003
- Backing Plate 3.0mm 5052 H32 perforated
- Face Plates 0.5mm 5052 H32

#### Crush Properties (Static)

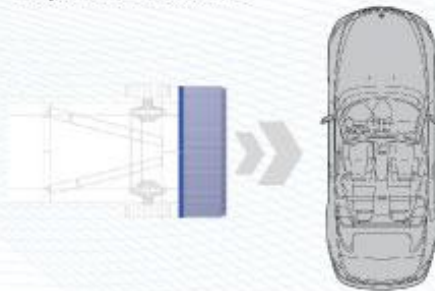


Our company has obtained DIN6701 quality system and ISO 9001:2015 certification.

**IMPORTANT NOTICE:** This introduction includes these barrier product, and its relevant information processes or standard is aimed to keep latest, accurate, and complete. However, Cansinga cannot warrant that this is always like this. Accordingly, it purchaser or user is responsibility to conduct sufficient testing and evaluation, to ensure the suitability of Cansinga's products for a particular purpose. The information of these materials and product specifications does not constitute a sell contract. You submit an order to Cansinga, which will constitute a sell contract. If is accepted by Cansinga, must be able by Cansinga's terms and conditions of sale. Cansinga DOES NOT MAKES WARRANTIES OF ANY KIND FOR THESE MATERIALS OR INFORMATION, EITHER EXPRESS OR IMPLIED, INCLUDING BUT NOT LIMITED TO THE IMPLIED WARRANTIES OF MERCHANTABILITY AND FITNESS FOR A PARTICULAR PURPOSE. Cansinga owns and shall retain all worldwide rights in its intellectual property, and any other trademarks are used in these materials, which are the property of their respective owners. The information shall not be construed as an inducement, permission, or recommendation in these materials infringe any patent or other intellectual property rights of any third parties.

#### Specifications

United Nations ECE R95 Amendment 3  
 European Directive 96/27/EC



#### Availability

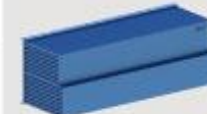

Accompanying with Certificate of Qualification and Test Data.  
 Paint: Grey or Blue anti-reflective paint standard,  
 Customizing paint.

Packaging: Single carton Volume: 1600mm × 560mm × 600mm  
 Packaged Weight: 30kg

## Crash Test Barrier

### 汽车测试碰撞壁障

测试壁障蜂窝铝采用模块化设计，其强度低、质量轻，吸能行程大。当发生高速碰撞时，蜂窝迅速形变压缩，通过短时间内吸收巨大冲击能量，其高效吸能状态保证通过变形吸能使车辆缓慢减速。其似标尺般稳定一致的强度值可有效提供以汽车碰撞测试稳定可靠重复性参考值，有效判断试验样车的碰撞性能。

GB20071-2006	静态测试每批进行，压缩速度100mm/min,块4、5、6压缩300mm,块1、2、3压缩350mm.	主蜂窝尺寸	上组蜂窝500×250×440mm; 下组蜂窝500×250×500mm,	
	动态测试每生产100个进行，碰撞速度35±0.5km/h，碰撞台车和壁障总质量950±20kg.	蜂窝种类	共6个蜂窝块，每3个一组，4种类型：蜂窝单元尺寸19±1.9mm；上组蜂窝单元3003铝；下组蜂窝单元5052铝。	
C-NCAP	从蜂窝铝上均匀分布的4个位置上取得的8个尺寸150×150×50mm样品进行测试。 主蜂窝：0.308Mpa < S(n) < 0.342Mpa n=1,2,3 保险杠蜂窝：1.540Mpa < S(n) < 1.711Mpan=1,2,3 其中：8个样品中的7个应符合上述规定。	主蜂窝尺寸	主蜂窝 1000×650×450mm; 保险杠蜂窝 1000×330×90mm.	
		蜂窝种类	主蜂窝： 19.1mm±20% 0.308-0.342MPa; 保险杠蜂窝： 6.4mm±20% 1.540-1.711MPa.	

👤 许磊    ☎ 150 0463 0889    ✉ lxu@cansinga.com

📍 广东省深圳市宝安区西乡街道凤凰岗社区宝田一路336号